

NOBSA Rug



ames

NOBSA Rug



Product type

Rug

Materials

100% natural virgin wool

Colours

blossom rose/ochre

bottle green/orange

traffic grey/grey brown

traffic grey/beige

bottle green/ochre

traffic grey/traffic grey/cream

traffic grey/ochre/cream

rumba red/ochre/cream

marine blue/light green/cream

Country of origin

Colombia

Place of use

Commercial and

Residential

Environment

Indoor

Customise product

Please contact

shop@amesliving.de

for bespoke version

Design and inspiration

The Nobsa Rug, available in three sizes, is a graphic design by Sebastian Herkner, featuring gentle colour-blocking to create a multi-dimensional effect. The designer was inspired by the patterns of the plastic bags in which Colombian farmers carry their potatoes. By combining colours of similar shades and different weaving techniques, an intriguing pattern is assembled that adds texture and interest to any room. The Nobsa collection also includes cushions with matching patterns.

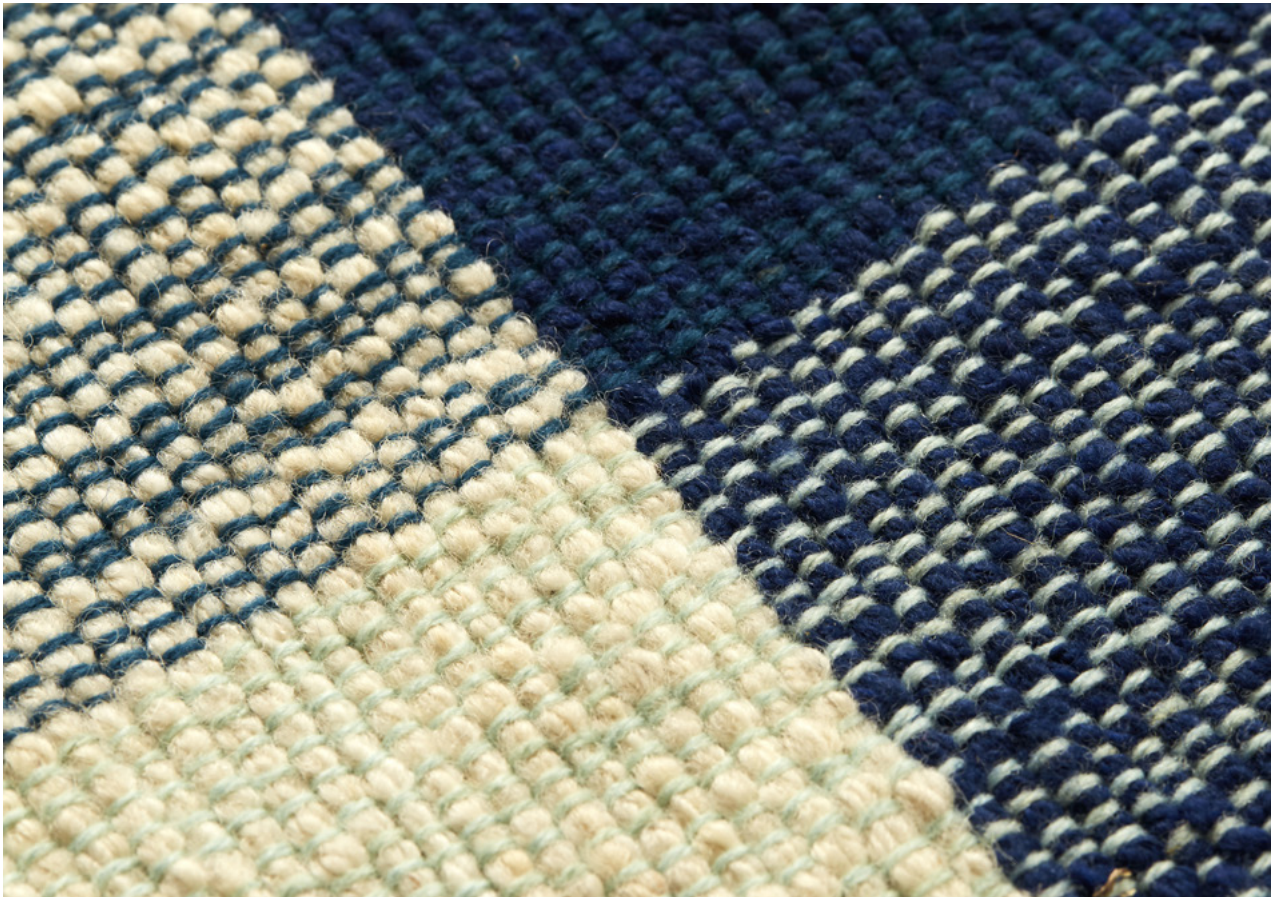
About the designer

German designer Sebastian Herkner is a long-term collaborator of ames and has visited Colombia multiple times to experience the country's cities, nature and people first hand. He also visited many of the ateliers that ames has partnered with to learn about the unique traditional crafts of Colombia's regions. A sought-after contemporary designer and recipient of many industry awards, he has worked with many international design brands, creating intriguing pieces that showcase his intuition for interesting material, colour and texture combinations.

NOBSA Rug



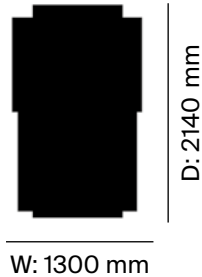
NOBSA Rug



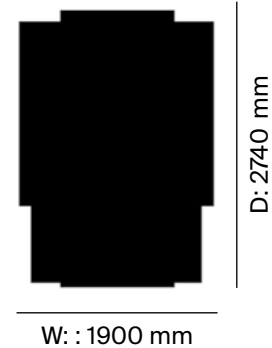
NOBSA Rug

Technical Specifications

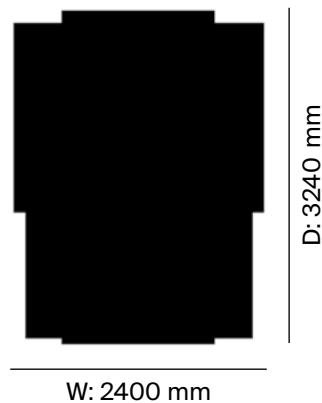
Rug Small



Rug Medium



Rug Large



Dimensions (mm)

Small

Width: 1300, Depth: 2140

Medium

Width: 1900, Depth: 2740

Large

Width: 2400, Depth: 3240

Packaging dimensions

(H x W x D) (mm)

Small

500 x 700 x 150

Medium

500 x 700 x 150

Large

500 x 700 x 150

Item weight (kg)

Small

7

Medium

8

Large

9

Craft and manufacturing

The rug is hand-woven and manufactured in a small family-owned workshop based in the Colombian city of Nobsa. It takes three days to dye and prepare the wool fibres and an additional eight days to weave the rug.

Care instructions

Some shedding will occur when vacuuming the rug, especially in the beginning. We recommend cutting loose threads with a scissor or pull them in with a crochet needle. Vacuum rug regularly. As the fibres have been dyed by hand, each model's colour varies slightly. To protect the colours, avoid exposing the product to direct sunlight over long periods and change its position regularly so the colours age evenly. We also recommend using an anti-slip underlay to reduce dust collection. Only use a professional rug cleaning service for the entire rug. The dimensions can vary minimally as each rug is made by hand.

NOBSA Rug Small



blossom rose/ochre
00ANORS54



bottle green/orange
00ANORS64



traffic grey/grey brown
00ANORS74



traffic grey/beige
00ANORS104



bottle green/ochre
00ANORS84



traffic grey/traffic grey/cream
00ANORS14



traffic grey/ochre/cream
00ANORS24



rumba red/ochre/cream
00ANORS34



marine blue/light green/cream
00ANORS44

NOBSA Rug Medium



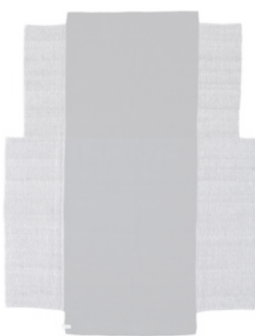
blossom rose/ochre
00ANORM54



bottle green/orange
00ANORM64



traffic grey/grey brown
00ANORM74



traffic grey/beige
00ANORM104



bottle green/ochre
00ANORM84



traffic grey/traffic grey/cream
00ANORM14



traffic grey/ochre/cream
00ANORM24



rumba red/ochre/cream
00ANORM34



marine blue/light green/cream
00ANORM44

NOBSA Rug Large



blossom rose/ochre
00ANORL54



bottle green/orange
00ANORL64



traffic grey/grey brown
00ANORL74



traffic grey/beige
00ANORL104



bottle green/ochre
00ANORL84



traffic grey/traffic grey/cream
00ANORL14



traffic grey/ochre/cream
00ANORL24



rumba red/ochre/cream
00ANORL34



marine blue/light green/cream
00ANORL44