

Products / Planters / Stone Planter 140x105x140

Stone planter 140x105x140

by Stefano Giovannoni & Elisa Gargan

Stones outdoor furniture collection, designed by Stefano Giovannoni, convinces with its organic shapes. As its name suggests it appears to be found in nature itself, creating synergism between the natural and the artificial landscape. Stones can fit perfectly into any environment, transmitting its own particular elegance, thanks to its material, as well as its original shape.

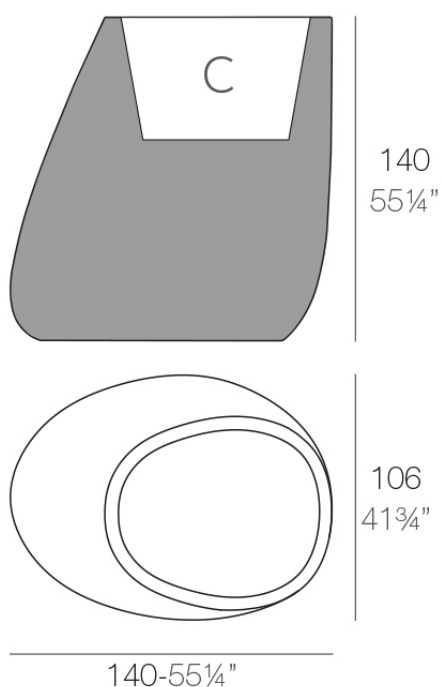


Info

Description

Pot made of polyethylene resin by rotational moulding. 100% Recyclable.
Item suitable for indoor and outdoor use. Available in different finishes.

Weight: 42 Kg



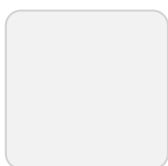
STONE Macetero XL C = 252 L \times 62 cm
STONE Planter XL C = 66½ gal \times 24 1/2"

Finishes

finishes

BASIC

Ref. 55012A



ice



orange



notte blue



crema



green



purjai red



white



black



bronze



steel



anthracite



red



khaki



taupe



ecru

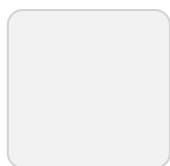


beige

Matt Polyethylene

SELF-WATERING

Ref. 55012R



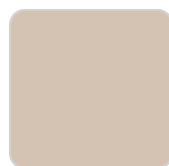
ice



orange



notte blue



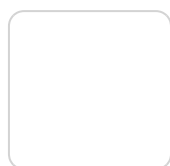
crema



green



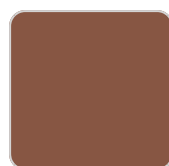
purjai red



white



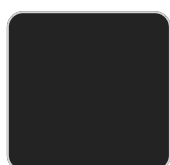
black



bronze



steel



anthracite



red



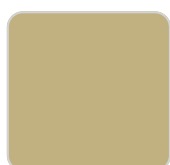
khaki



taupe



ecru



beige

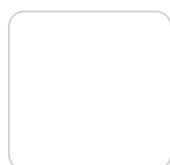
Self-watering system included in all planters except those with basic finish

LACQUERED

Ref. 55012F



purjai red



white



black



bronze



steel



anthracite



red



khaki



taupe



ecru



beige

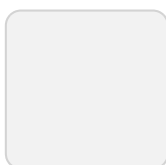
champany

Lacquered Polyethylene

lighting

LIGHT

Ref. 55012W

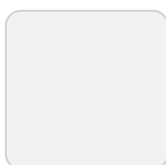


ice

White internally lit unit with LED technology. Available only in matte ice white finish.

RGBW LED

Ref. 55012L

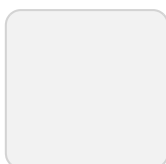


ice

Unit with internal lighting with RGBW LED technology and remote control unit for switching colors. Available only in matte ice white finish. Remote control included.

RGBW LED DMX

Ref. 55012D



ice

Unit with internal lighting with RGBW LED technology and remote control unit for switching colors. Also controlled by DMX-1024 (wireless), enabling communication between one or more products simultaneously via the DMX transmitter (not included). There are two options to choose from: Professional XLR DMX and Home WIFI DMX. (Remote control included). Optional battery

RGBW LED BATTERY

Ref. 55012Y



ice

Unit with internal lighting with battery-powered RGBW LED technology. Includes charger and remote control for switching colors and charger. Available only in matte ice white finish.

RGBW LED DMX BATTERY

Ref. 55012DY



ice

Unit with internal lighting with RGBW LED technology and remote control unit for switching colors. Also controlled by DMX-1024 (wireless), enabling communication between one or more products simultaneously via the DMX transmitter (not included). There are two options to choose from: Professional XLR DMX and Home WIFI DMX. (Remote control included).

Ambients

