

Kelly H

Designer: Claesson Koivisto Rune
Year: 2013

Kelly is a collection of chairs characterized by a friendly and jovial spirit which is expressed with organic shapes, pure and shiny colours and positive feelings. The personality of every model is distinguished by various shapes and sizes of seat and backrest, always suspended on thin metallic structures which remind vintage furniture and modern art's works. Kelly chairs can stay independent or create different combinations and compositions, both in domestic and public environments. Kelly lounge armchair can be also combined with a coordinated footrest.

Developed by Tacchini in Italy

Dimensions (cm)

Cod. OKELH104

W 104 D 78 cm
H 126 H seat 43 cm

Awards

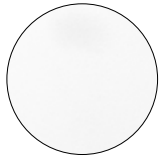
EDIDA
AwardGood Design
AwardRed Dot
Design AwardNon-removable
coversCAD Files:
3D (.dwg, .3ds)
2D (.dwg)Download CAD
files at tacchini.it/en/downloads

Materials description

Internal frame: cold foam with metal inserts.

Base: tubular metal base Ø 16 mm. Powder coated painted or chromed.

Painted base



T02 RAL 9016
White



T03 RAL 7016
Grey



T05 RAL 7023
Grey



T07 RAL 9011
Black



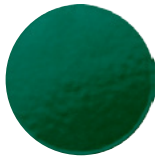
T10 RAL 2004
Orange



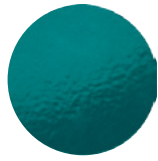
T12 RAL 3000
Red



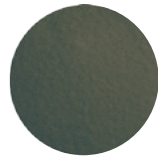
T17 RAL 3014
Pink



T18 RAL 6029
Green



T19 RAL 5021
Blue



T61 RAL 6014
Green

Chromed base



T25
Matt Champagne Gold

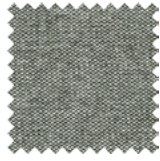
Suggested upholsteries



Bakul



Bopha



Bryony



Calantha



Dianella



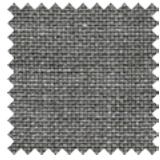
Erika



Euclidium



Sedum



Thesium

Materials informations



Cold foam	59%
Metal inserts	33%
Upholstery	8%

Polyurethane

Flexible expanded polyurethane is a solid elastic polymeric material with open cell structure. It is a non-toxic material and above all free from ozone-damaging components. Production and processing of the polyurethane we use meet the objectives of the new policy of ensuring the protection of human health and of the environment. We focus in particular on the choice and use of the types of density of polyurethane suitable for preserving over the years the features of load capacity, elasticity and resilience. For products used in public spaces flame-retardant expanded polyurethane is chosen, tested and certified according to international regulations.

Metal

The need to combine complex yet lightweight shapes with resistant materials necessarily involves the use of metals such as steel and aluminium. Products in polyurethane foam are made with an inner steel frame for adding strength to the structure. The bases are in tubular metal which can be chromed with a gloss or satin finish or painted with epoxy powders.

Foam

Similar to polyurethane, foam is used for moulding products with special and organic shapes. It is a material which is highly resistant to ageing and flames. Its appearance at the edges is clean, compact. All products made with a foam structure offer a solution with extraordinary comfort.

Recyclability

All Kelly H elements are 100% recyclable when fully separated. Tacchini undertakes on-going research and development, with efforts made to introduce products which are a perfect combination of function and safety without jeopardizing the final design of the same articles. During production attempts are made to minimize noise and emission levels and to reduce rejects as far as possible. All the single materials which make up the production process, once disassembled, can be reused several times, maintaining a high quality standard.

Packaging

Kelly H element is dispatched already assembled. It is protected by tissue paper and cellophane to protect the covering from dust and direct contact with the cardboard. The product is packed in rigid cardboard boxes suitable for world export. Manufacture of the packaging observes the criteria for recovery both as recycling and energy recovery and composting.

Once a product reaches the end of its life cycle it has to be eliminated.

To discover more about Tacchini environmental policy please visit: www.tacchini.it



Claesson Koivisto Rune

The Claesson Koivisto Rune studio was established in 1995 as a multidisciplinary architecture and design workshop, in line with the classic Scandinavian tradition, but with the aim of exploring new concepts, and pursuing the values of simplicity and innovation. The three Swedes have created architectural designs throughout the world and in every sector, from homes to restaurants, retail to executive buildings, as well as furniture ranges for numerous major international firms.

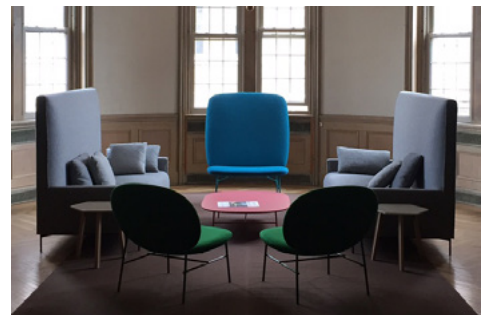
Selected projects:



The Fourth, Tafelrond Hotel
(Leuven, Belgium)



EY
(Barcelona, Spain)



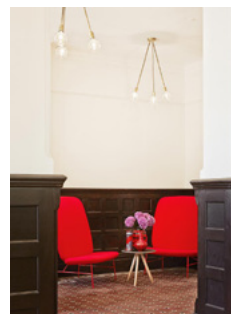
EF Education Butler Hall
(Tarrytown, United States)



Turzyn Shopping Mall
(Szczecin, Poland)



Engelhorn Fashion Store
(Mannheim, Germany)



EF Eastbourne
(Eastbourne, Great Britain)