

Products / Dining Tables / Frame Aluminium Table 200x100x74

# Frame aluminium table 200x100x74

by Ramón Esteve

Frame, outdoor collection by Ramon Esteve, comes from generating serene and timeless shapes using the framework as elementary geometry. The endless possibilities offered by the material using advanced technology, was the motivation to explore the limits.



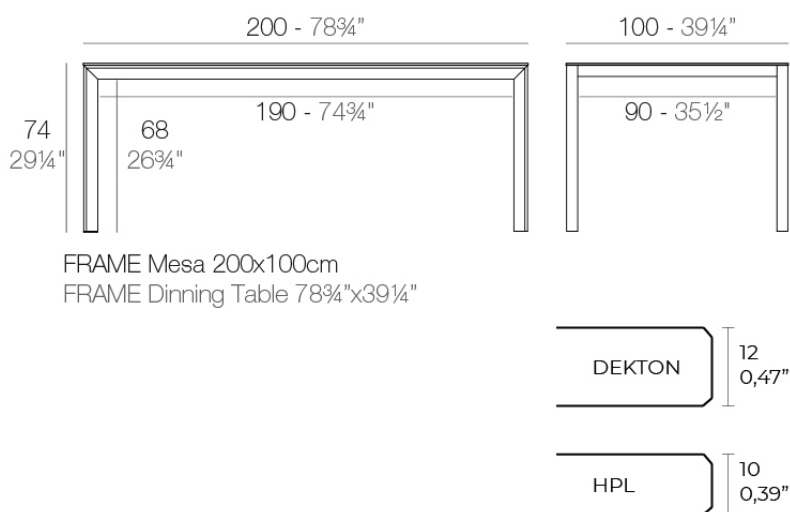
# Info

---

## Description

Extruded aluminum with cast lacquered aluminum base. HPL Table top ó Dekton Table top. Item suitable for indoor and outdoor use. HPL Table top.

Weight: 39.15 Kg



# Finishes

---

## finishes

---

### LACQUERED

Ref. 54241F



white



black



melocoton



navy



ecru

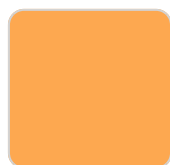
Lacquered aluminium profile.

### LACQUERED + HPL FULL WHITE

Ref. 54241FB



white



melocoton



navy

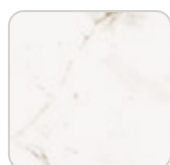
Lacquered aluminium profile.

### LACQUERED + DEKTON

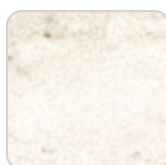
Ref. 54241FM



kelya



entzo



danae

Lacquered aluminium profile.

# Ambients

---

